

# MBA

Master of  
Business Administration

College Inspiring  
Innovation Intelligence



IN PARTNERSHIP WITH  
**International  
American  
University**



# A College Inspiring Innovative Intelligence

Welcome to Model Institute of Technology (MIT), proudly affiliated with the prestigious International American University (IAU), California, USA, accredited by more than ten recognized accrediting institutions. Experience the world-class education in the heart of Kathmandu, under the management of Kathmandu Model College (KMC).

## VISION

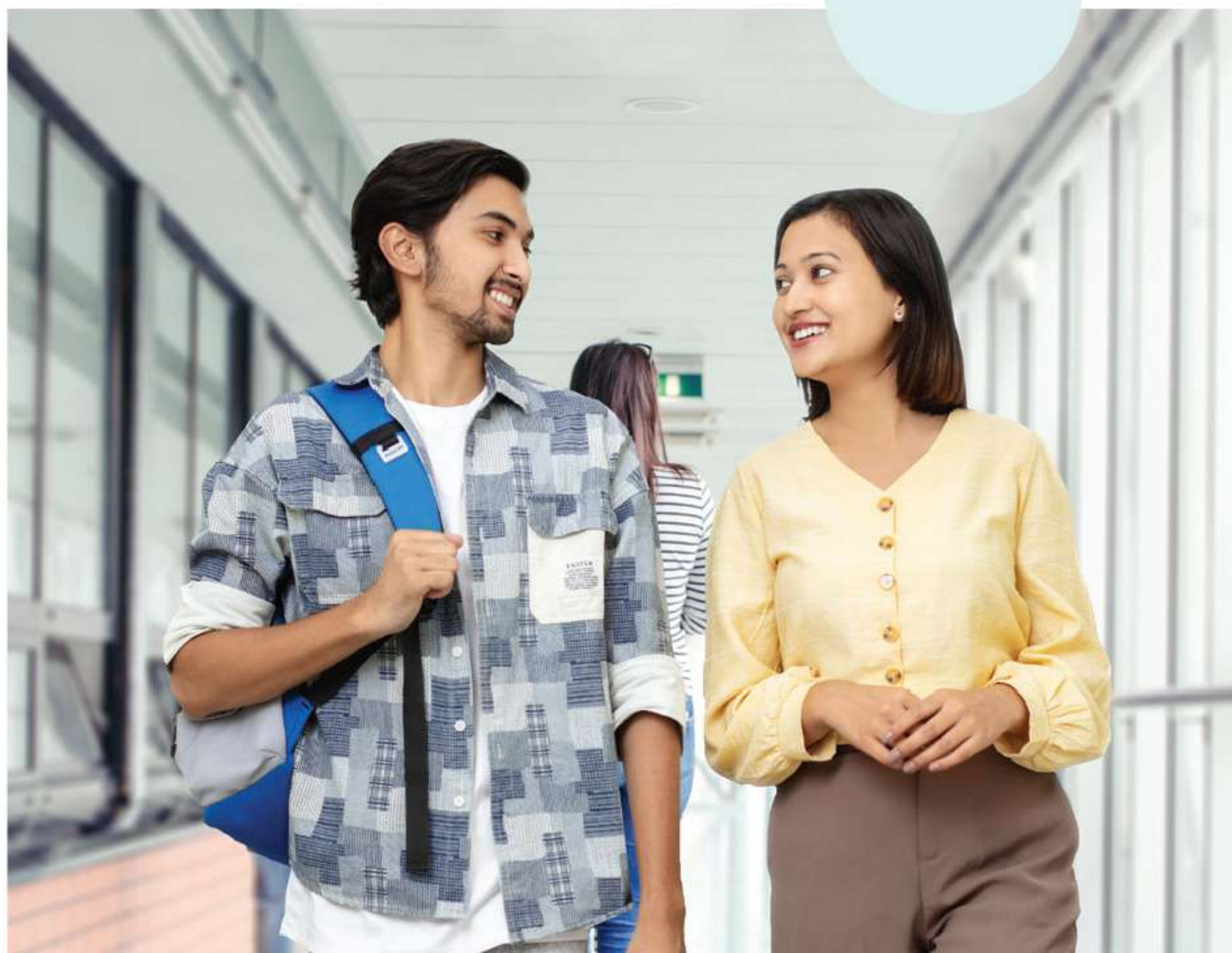
To be the first choice of students for International degrees in Nepal.

## MISSION

To produce graduates capable of solving national and global challenges providing world-class education in Nepal.

## Approval

Model Institute of Technology (MIT) is approved by Government of Nepal, Ministry of Education Science and Technology.





# MBA



2

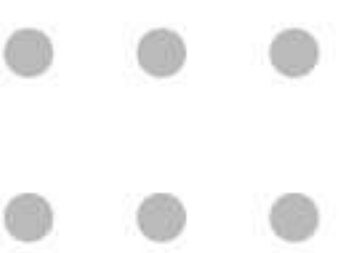
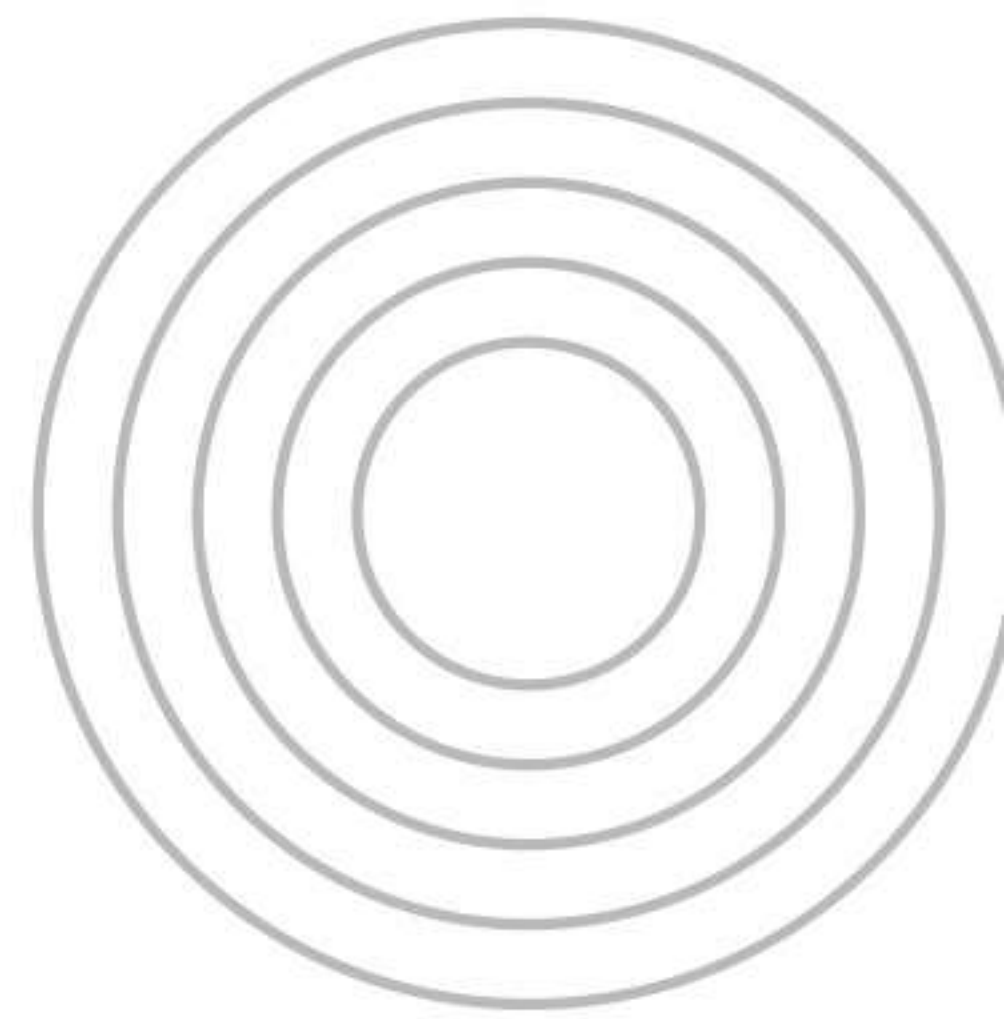
MBA is a  
two-year program

60

60-credit hours

## Course Objectives

The MBA program provides students with opportunities to strengthen their business acumen, linking academic concepts to real-world applications, cultivating analytical, quantitative, and strategic skills for diverse career prospects, and accommodating both working professionals and full-time students.





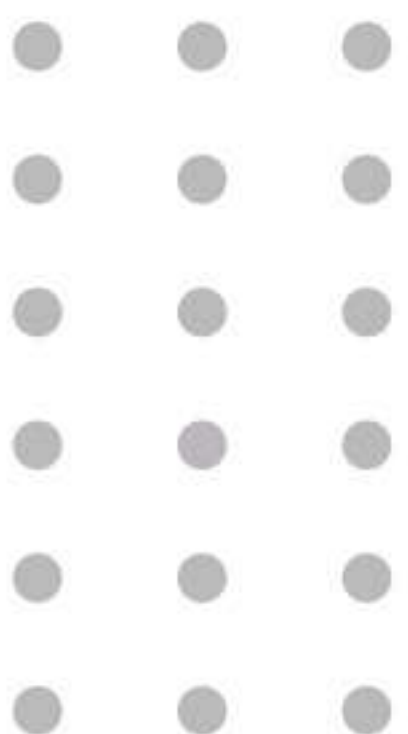


# Master of Business Administration

2  
YEARS

## Admission Requirement

Completion of bachelor or equivalent degree from the recognized University.



## Graduation Criteria

60

Successfully completed 60 credits semester units as outlined in the curriculum.



Participate in a minimum of two internship experiences.

3.0  
GPA

Maintain a cumulative GPA of at least 3.0 on a 4.0 scale by completing all required coursework.



Fulfill all academic and financial requirements.





# Fields of Career Prospects



## Blended Mode of Learning

Our MBA program combines both on-campus and online components. Students attend some classes in person and complete others online. This approach offers a balance between flexibility and in-person interaction

- Self-directed learning
- Leveraging experience
- Problem-centered approach
- Relevance to careers
- Respect for learners
- Flexibility and relevance
- Recognition of prior learning
- Motivation and feedback
- Collaboration



# Facilities And Services

MIT's state-of-the-art facilities are designed to nurture an environment that encourages creativity and provides a sense of homely comfort. These facilities are the canvas for students as well as our human resources to reach their fullest potential in exploring,

Classroom, Computer Lab, Canteen, Auditorium, Library, Incubation Lab, Writing Center, Physical Activity Center, Basketball court, Football ground, Tennis court.

## MIT Community

MIT has established collaborative relationships with diverse companies, institutions, and individuals enriching the offerings with add-on services, resources, a supportive community, and unique benefits to the MIT community

# Evaluation Criteria

Once admitted to a Bachelor of Business Administration (BBA) program, students are evaluated in several areas throughout their academic journey. Here are key evaluation areas and components that we follow:

## 1. Academic Performance

- Periodic Assessment
- Assignments & Project Work
- Quizzes
- Class Participation

## 3. Professional and Ethical Conduct

- Attendance & Punctuality
- Honesty & Integrity
- Behavior & Attitude

## 5. Soft Skills

- Communication Skills
- Teamwork Skills
- Time Management Skills
- Negotiation Skills

## 2. Practical Application & Skills

- Case Studies
- Presentations
- Group Projects

## 4. Research & Innovation

- Research Papers / Article
- Innovative Solutions

## 6. Extra-curricular Participation:

- Clubs & Organizations
- Community Service



# Co-Curricular Engagement:

MIT offers two models in Co-curricular engagement. The basic package includes basic sets of programs designed through academic-industry disclosure and next is a tailored co-curricular program aligned with the student's interests and career perspective.

- Leadership Workshops
  - Business Presentation
  - Modeling workshop
  - Public Speaking
  - Business Conferences
  - Interpersonal & Problem Solving
  - Writing Skills, Communication & GD Workshop
  - Advanced MS Excel
  - Business Simulation Games
  - Tech Career development
  - Workshops and Seminars
  - Negotiation Skill Development
- Leadership & Manager skills workshop
  - Entrepreneurship pitch competitions
  - Consulting Projects
  - Research Training
  - Case Competitions
  - Management Simulation
  - Proposal Development Workshop
  - Team Building Workshop
  - IT Entrepreneurship pitch competitions
  - Business Mirroring
  - Educational Field Visit
  - Industrial Visit
  - Seminar on Career Placement
  - Job Fair

## Scholarship Areas

- Merit Based Scholarship
- Athletics Scholarship
- Early-bird Scholarship
- MIT Family Scholarship
- Remote area Scholarship
- Need-based and Reservation Scholarship
- Educate Girl Scholarship
- International Student Scholarship
- Corporate or Industry Partnership Scholarship







# Student Affairs

- Counseling
- Internship and Job Placement
- Student Mobility Programs
- Exposure tours
- Community engagement
- Grievance and Feedback



Connect with us

